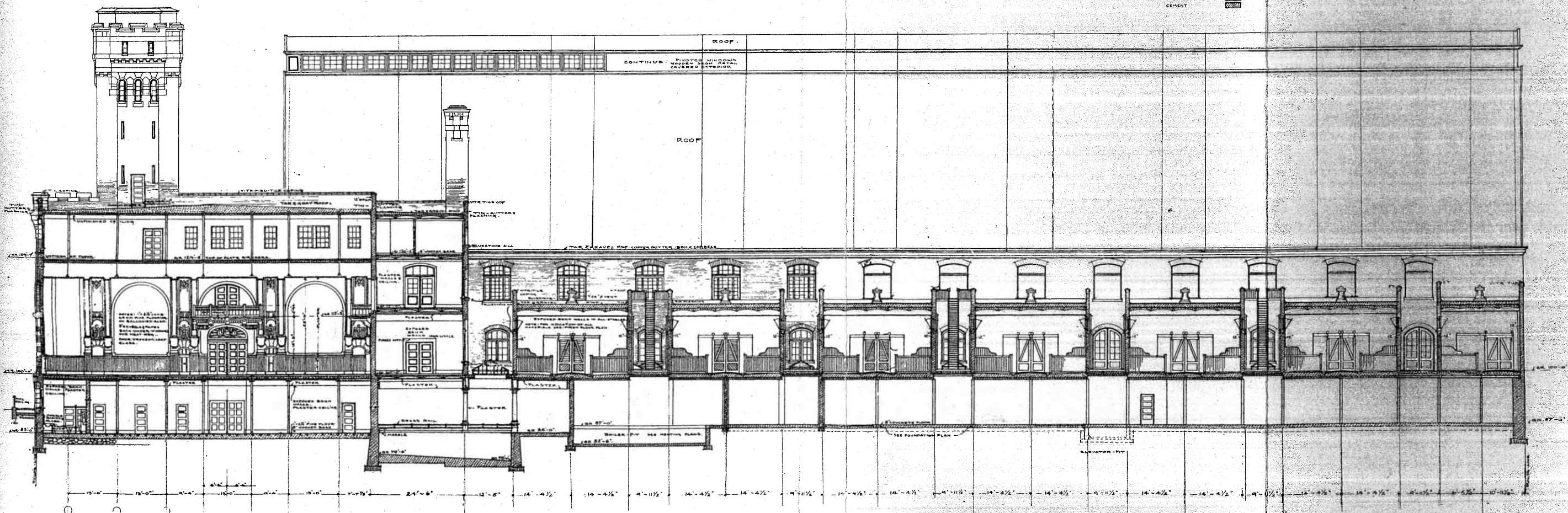
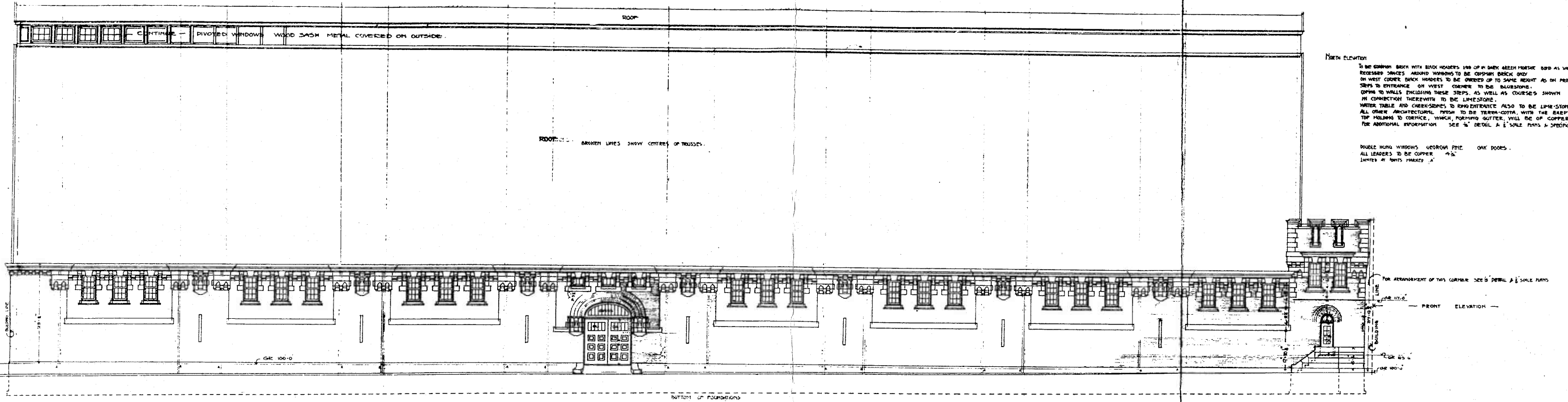


LONGITUDINAL SECTION THROUGH AXIS OF RING LOOKING SOUTH



LONGITUDINAL SECTIONS: ARMORY FOR SQUADRON C, N. G. N. Y., BROOKLYN, N. Y.
Pilcher & Tachau, Architects.

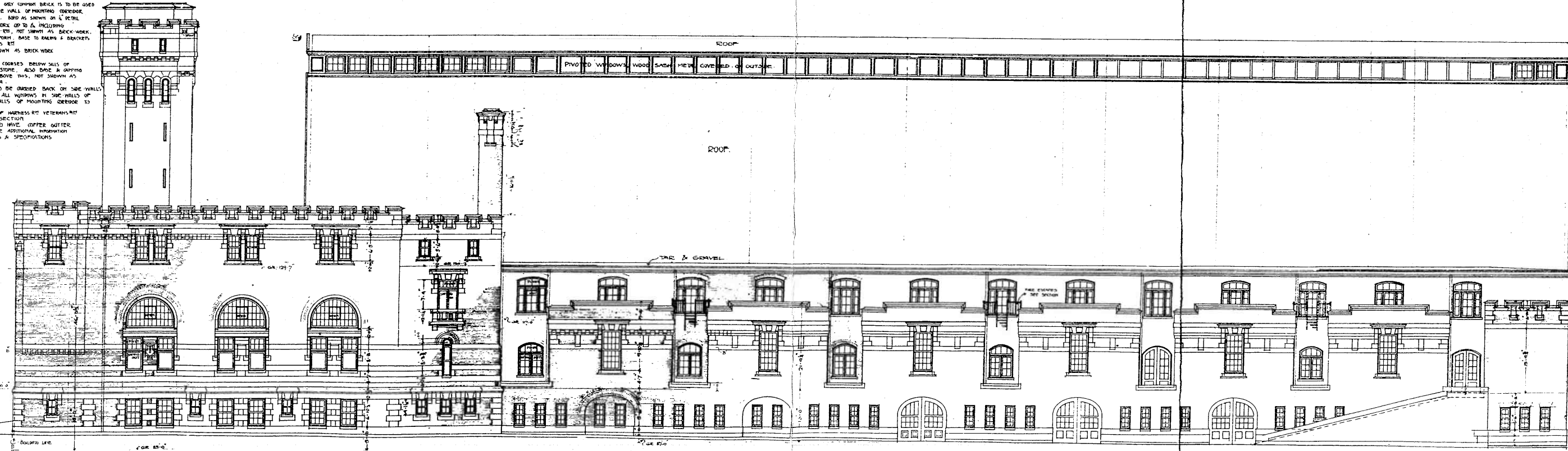


North Elevation
 TO BE COMMON BRICK WITH BRICK HOUSERS 1 1/2 OF 1/2 DARK GREEN PESTER 800 AS SHOWN IN 1/2 PENCIL
 RECESSED SPACES AROUND WINDOWS TO BE COMMON BRICK ONLY
 ON WEST CORNER BRICK HOUSERS TO BE OWNED UP TO SAME HEIGHT AS ON FRONT ELEVATION
 STRIPS TO ENTRANCE OF WEST CORNER TO BE BRICKWORK
 COPING TO WALLS INCLUDING THESE STRIPS, AS WELL AS COURSES SHOWN
 IN CONNECTION THEREWITH TO BE LIME-STONE
 WATER TABLE AND CORNICES TO SHOW ENTIRELY ALSO TO BE LIME-STONE
 ALL OTHER ARCHITECTURAL PARTS TO BE TERRAZZO-COTTA, WITH THE EXCEPTION OF
 TOP FLOORS TO CORNICE, WHICH FORMING GUTTER, WILL BE OF COPPER. SEE 1/2 DETAIL
 FOR ADDITIONAL INFORMATION SEE 1/2 DETAIL A 1/2 SCALE PARTS & SPECIFICATIONS

DOUBLE HUNG WINDOWS GEORGIA PINE OAK DOORS
 ALL LEANERS TO BE COPPER 1/2
 LANTERNS IN WEST WALLS 1/2

NORTH ELEVATION

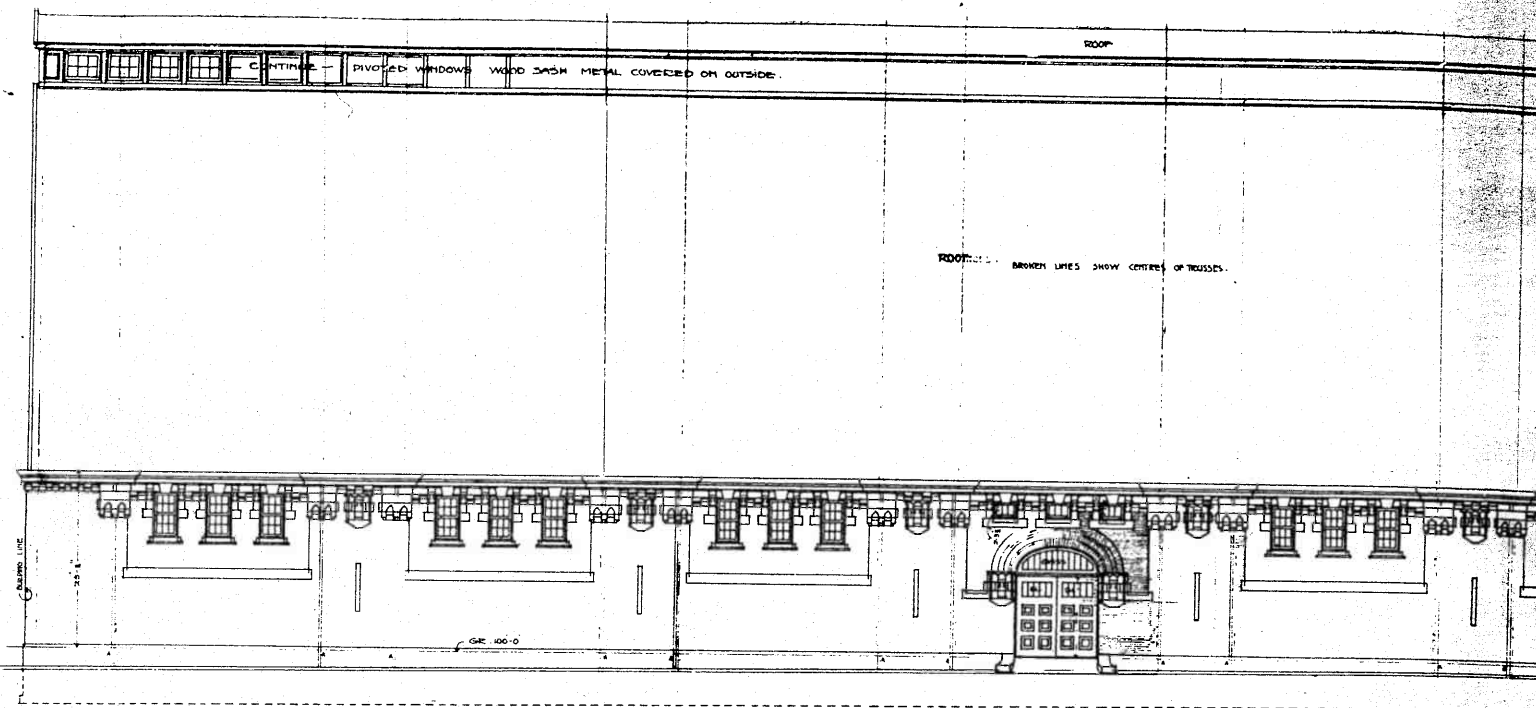
TO BE COMMON BRICK WITH BRICK HOUSERS 1 1/2 OF 1/2 DARK GREEN PESTER 800 AS SHOWN IN 1/2 PENCIL
 RECESSED SPACES AROUND WINDOWS TO BE COMMON BRICK ONLY
 ON WEST CORNER BRICK HOUSERS TO BE OWNED UP TO SAME HEIGHT AS ON FRONT ELEVATION
 STRIPS TO ENTRANCE OF WEST CORNER TO BE BRICKWORK
 COPING TO WALLS INCLUDING THESE STRIPS, AS WELL AS COURSES SHOWN
 IN CONNECTION THEREWITH TO BE LIME-STONE
 WATER TABLE AND CORNICES TO SHOW ENTIRELY ALSO TO BE LIME-STONE
 ALL OTHER ARCHITECTURAL PARTS TO BE TERRAZZO-COTTA, WITH THE EXCEPTION OF
 TOP FLOORS TO CORNICE, WHICH FORMING GUTTER, WILL BE OF COPPER. SEE 1/2 DETAIL
 FOR ADDITIONAL INFORMATION SEE 1/2 DETAIL A 1/2 SCALE PARTS & SPECIFICATIONS



ROOF

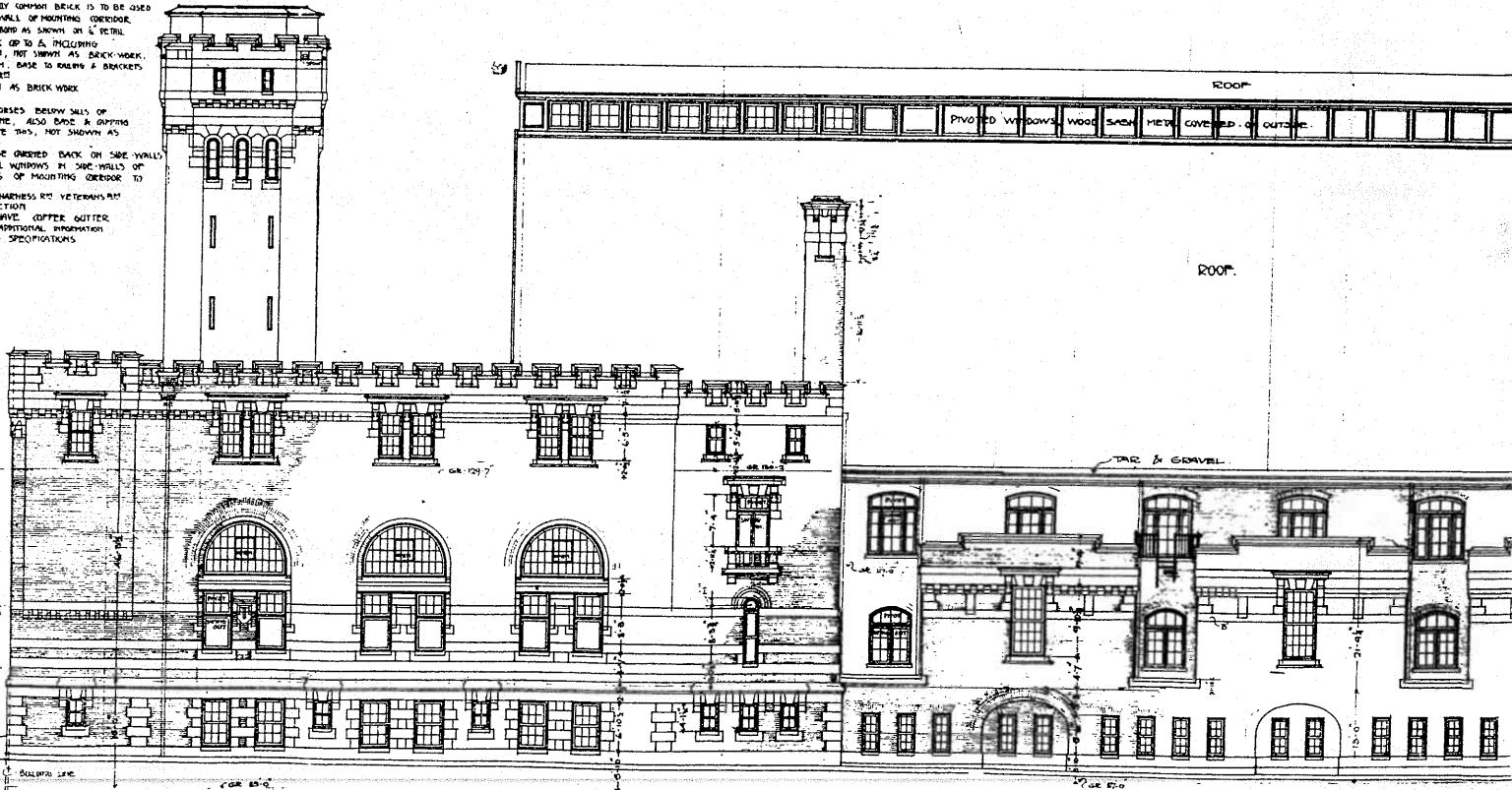
SOUTH ELEVATION

NORTH AND SOUTH ELEVATIONS: ARMORY FOR SQUADRON C, N. G. N. Y. BROOKLYN, N. Y.



NORTH ELEVATION

SOUTH ELEVATION
 TO BE OF COMMON BRICK END UP IN DARK GREEN HONOLULU WITH BLACK
 MORTAR. USED IN THE FOLLOWING PLACES:
 ON ADMINISTRATION BUILDING UP TO STONE COURSE (MARKED "A")
 ON WEST FRONT OF STABLES UP TO TERRAZA-COTTA COURSE
 ON SAME LEVEL (B) ABOVE THIS ONLY COMMON BRICK TO BE USED
 SIDE WALLS OF STABLES & OUTSIDE WALL OF MOUNTING CORRIDOR
 ALSO TO BE COMMON BRICK OVER SAND AS SHOWN ON 1" DETAIL
 OF ADMINISTRATION BUILDING ALL WORK UP TO & INCLUDING
 BRICKWORK IN INTERIORS TO SAND (SEE THE SHOWN AS BRICK WORK
 TO BE LIME-STONE ALSO PATIWAYS BASE TO RAISE & BRACKETS
 TO BALCONY IN FRONT OF VETERANS' HUT
 ABOVE THIS ALL WORK NOT SHOWN AS BRICK WORK
 TO BE TERRAZA-COTTA
 ON FRONT PARADES OF STABLES, COARSES BELOW WALLS OF
 SIDE-FRONT WINDOWS TO BE LIME-STONE ALSO DOME & GUTTERS
 TO RIZOVIA ALL WORK ABOVE THIS, NOT SHOWN AS
 BRICK TO BE TERRAZA-COTTA
 TERRAZA-COTTA WORK ON STABLES TO BE ORDERED BACK ON SIDE WALLS
 7'-0" FROM EXTERIOR LINE ALL WINDOWS IN SIDE WALLS OF
 STABLES A SIDE IN FRONT WALLS OF MOUNTING CORRIDOR TO
 HAVE "BLUE-GLASS" GLASS
 THE REPAIRS OF SIDE WALL OF HARNESSES REPAIR VETERANS' HUT
 AND PARTIAL REPAIRS SEE SECTION
 FOUR-FIVE MOUNTING CORRIDOR TO HAVE COPPER GUTTER
 ON BRICK CORBELS. FOR ADDITIONAL INFORMATION
 SEE 1" DETAIL & WALL DRAWINGS & SPECIFICATIONS



SOUTH ELEVATION